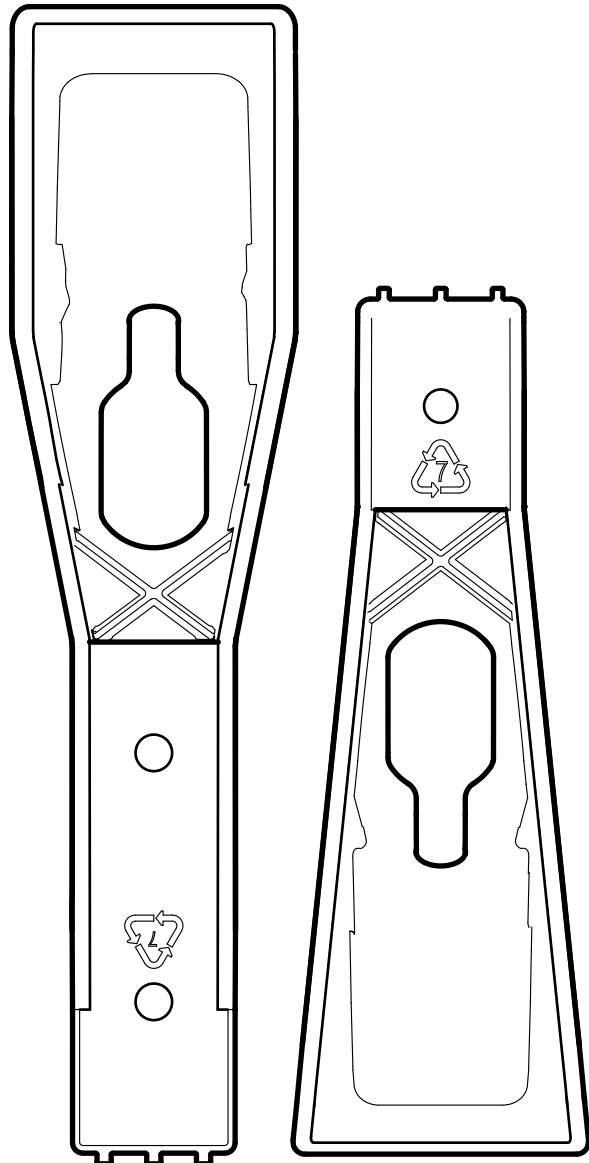


# User Guide

## Support Rigidizer | SR-XL / SR-L

V-TRAK



SR-XL

SR-L

Document Number: IFUSRXL/L-V1.1

## V-Trak Backrest support rigidizer

Designed for use with the Deep contour backrest when extra rigidity in the lateral support is required.

V-Trak backrests are designed to be dynamic for comfort and stability. For some patients more support is needed due to leaning or support for propelling. The new Rigidizer allows the lateral support of the backrest to be adjusted to provide more support and strength on the side required. The V-Trak rigidizer provides support where the client needs it.

The Rigidizer is an optional addition to V-Trak backrests. This support can be fitted on the side precisely where the therapist needs it. Simply clicked in at the rear of the backrest.

- Can be applied to either side depending on client. Offering freedom on one side and support for leaning on the other
- Improves stability of lateral support by over 30%
- Can be simply removed
- Simple and economic
- For use on full range of deep contour backs
- **Supplied separately** - can be used in pairs if support is needed on both sides

### Fitting guidance

1. SR-XL Fits all Extra large backrests. SR-L Fits all Large backs
2. Unzip backrest on side where extra support is needed
3. **Make sure roller is wound out fully** as pictured. Then rotate roller horizontally to allow for rigidizer to slot over
4. To aid slotting on Rigidizer **bend in wing / lateral support** to increase space
5. Slot on Rigidizer between the wing hinge of the backrest
6. **Rotate Roller back to vertical position** to lock support
7. Tighten backrest wing to desired position

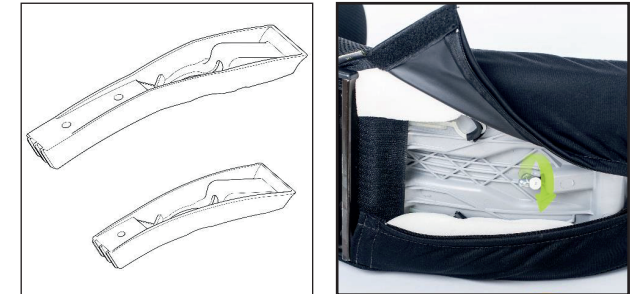
#### Support rigidizer for V-Trak backrests

- 1 SR-XL Support rigidizer - Extra Large - Can be used with all Extra Large deep contour backs AXSBD-XL / AXD-XL
- 2 SR-L Support rigidizer - Large - Can be used with all Large deep contour backs AXSBD-L / AXD-L

- ⚠ Always rotate roller back to the vertical position to lock support
- ⚠ Make sure both ends of support are contacting the backrest shell
- ⚠ When slotting on the rigidizer push in wing to increase space so rigidizer can slot on easily

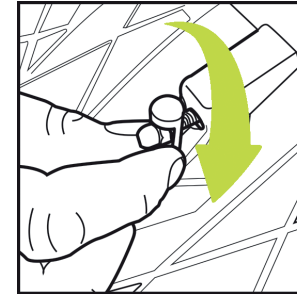
V-TRAK | TEL +44 (0)1443 236 530 | INFO@V-TRAK.COM | WWW.V-TRAK.COM

## V-Trak Backrest support rigidizer

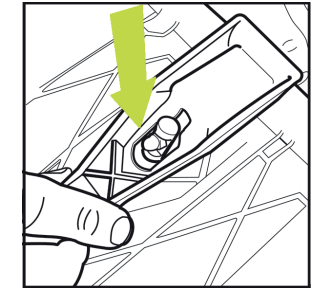


1. SR-XL & SR-L

2. Unzip backrest for access



3. Wind out & rotate roller horizontally



4 & 5. Push in wing and slot on Rigidizer



6 & 7. Rotate Roller back to vertical position to lock support in place

These instructions are intended to be a guide only and should not be used as a substitute for professional judgment. If there are any queries or any uncertainties please call us (01443 236 530) or email us info@v-trak.com for technical advice.

